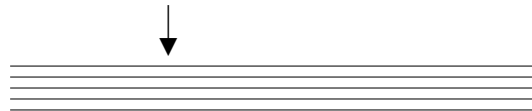


# THE SWIFT SINGERS

## Manual

Things to know about your score

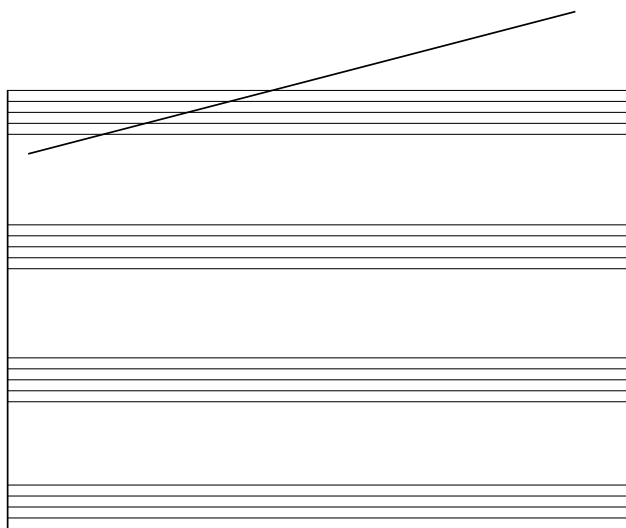
A group of five lines is called a **stave**



A group of staves is called a **system**.

Every stave in a system is always joined by a **vertical line** on the left.

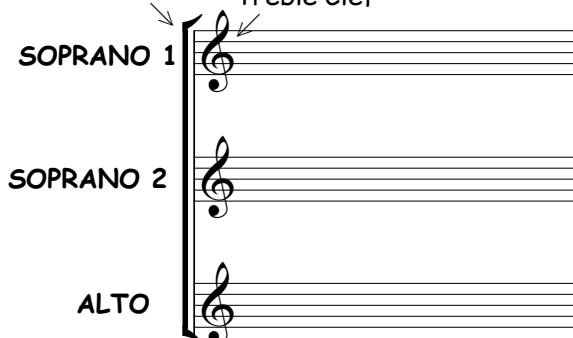
This system has four staves



Here is a system dressed up a bit

Choir parts are grouped together with a bracket

Swift Singers always read in the Treble Clef



The piano staves are grouped by a brace.



The pianist needs a stave for each hand